



RS INDUSTRIES

COMPANY PROFILE



www.rsrubbers.com

About Us.

Introduction

Our story began four decades ago, in 1976 when a small, dynamic compounding unit was established, to cater to small entrepreneurs for their requirements of rubber compounds of various polymers. Given the competition not many then guaranteed, the phenomenal success the company has achieved. We owe this to our vision, a vision that sees beyond the trivialities of competition and focuses itself on customer satisfaction. During these years we have evolved, progressed and branched out. We have adopted new methods and discarded the redundant ones.

Today we have created a niche in the market in the name of RS Industries catering to different industries like automobile, pharmaceutical, shipping industry, cement industry, packaging industry, food and beverages, oil and refinery sector.

We manufacture quality products with a highly skilled management and workforce, which undergoes quality testing through our advanced labs to ensure complete customer satisfaction.



Mission & Vision.

MISSION

Our mission at RS Industries is to deliver exceptional rubber solutions that empower industries worldwide. We are committed to innovation, quality, and precision, ensuring every product we create meets the highest standards and fulfills the unique requirements of our clients. Through dedication, expertise, and nearly four decades of experience, we strive to build lasting partnerships and contribute to the success of our customers in every project we undertake.

VISION

To be a leading global provider of high-quality, sustainable, and innovative rubber solutions that empower industries to thrive and drive progress in a rapidly evolving world.

Why RS Industries.

HIGH TENSILE STRENGTH

Our rubber products are engineered to withstand extreme stress without breaking or deforming. This makes them ideal for applications where durability and reliability are crucial, such as heavy machinery, automotive components, and industrial equipment.

SUPERIOR ELASTICITY

Elasticity is at the heart of our rubber products. Designed for maximum flexibility, our products return to their original shape after deformation, making them perfect for applications requiring resilience and adaptability.

OUTSTANDING WEAR RESISTANCE

RS Industries prioritizes wear resistance in all our products to ensure longevity and consistent performance. Our materials are specially formulated to resist abrasion, friction, and environmental wear, making them suitable for high-usage industrial applications.

Our Products.

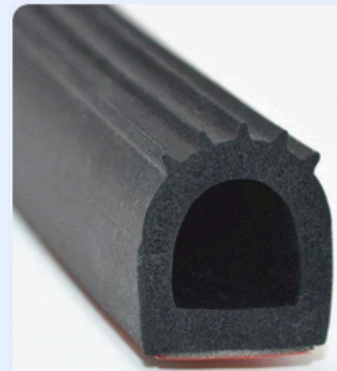
R.S. Industries specializes in crafting a wide range of high-quality molded rubber parts designed to meet the diverse needs of our clients. We are dedicated to delivering premium products and accessories for a variety of applications. If our standard offerings don't align with your specific requirements, we provide customized solutions tailored to your unique needs.



Rubber Washers



Rubber Cords



Extruded Sponge Profiles



Rubber Bushes



Rubber Conveyor Belts



Anti Vibration Pads



Rubber Couplings



Rubber Bellows



Rubber And Silicone tubing



Rubber Caps



Rubber Belts



Rubber O Rings



Rubber Vibration Isolators



Rubber seals And Oil Seals



Rubber Beadings & Glazings



Rubber Gaskets



Rubber Diaphragms



Rubber Hose Pipes



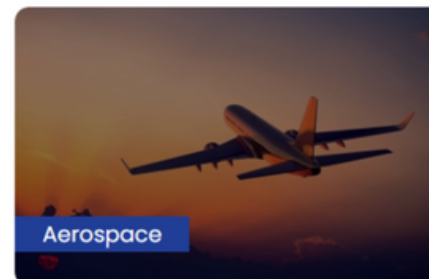
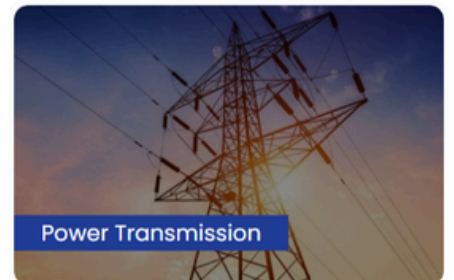
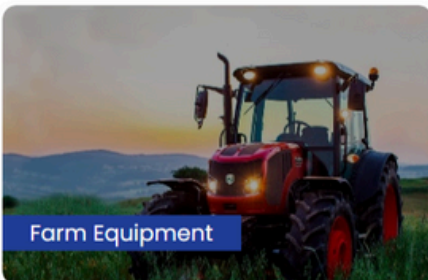
Rubber Covered Rollers



Extruded Rubber Profiles

Sectors We Serve

At RS Industries, we serve diverse industries worldwide, delivering rubber solutions tailored to meet the unique requirements of our customers.



Our Clients

Proudly serving clients across diverse industries with unmatched quality and trust



& many more...

Contact Us.

Ready to talk? We would love to hear from you.



RS Industries Private Limited

Goddev, Bhayandar East, Near Patil Yadav
Industrial Estate, Off B P Road, Bhayandar (East)



+91 998 741 1994



+91 22 28043242 / +91 22 28194775



rsindustries1974@gmail.com

For more info visit our website

www.rsrubbers.com

Thank You!